

DECKBOOK

Trade | July - September 2020



WHY CHOOSE COMPOSITE?

Composite decking is the modern alternative to timber decking, the advantage being that it does not rot or warp and is virtually maintenance-free. WPC decking (Wood Plastic Composite) is made from wood fibre, virgin polymer and a binding agent, so the result is denser, harder and heavier than wood alone. This means that there is no danger of splinters and, since the composite will not host the growth of algae, it is anti-slip even in the wet. With no health and safety issues, this makes it ideally suited to use in commercial and public areas as well for private decks.

Composite planks look like wood and they can be worked like wood, but unlike wood they do not need to be protected from water ingress which makes them naturally more suited to outdoor use.



Composite decking and cladding doesn't rot out or warp like traditional timber and has a longer lifespan - guaranteed for 15 years.

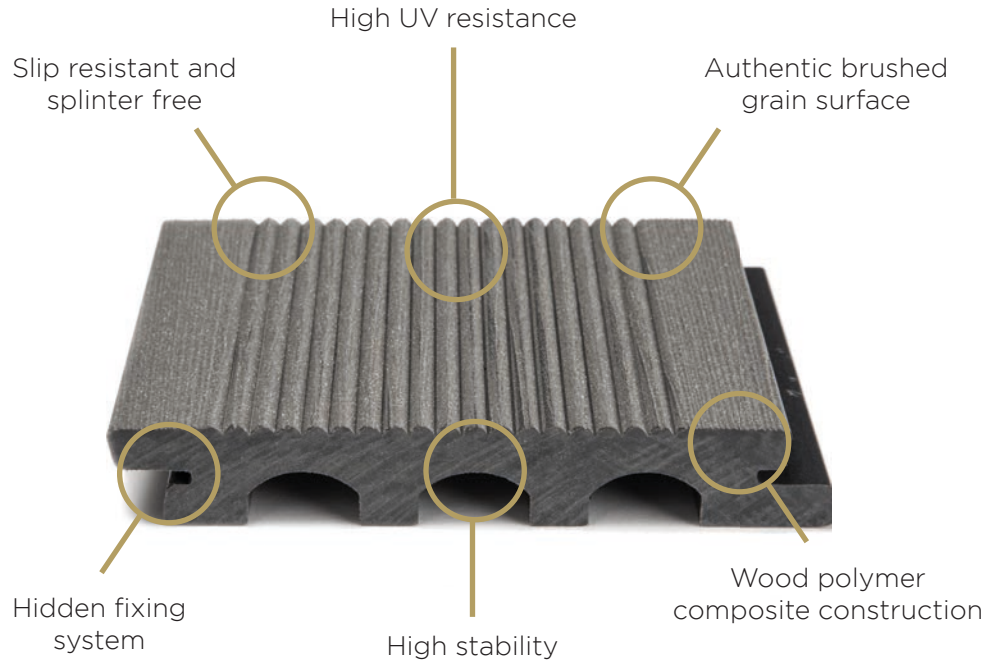


Composite decking and cladding is more resistant to fade and colour change even in direct sunlight.



Composite decking has no danger of splinters and it does not host the growth of algae. It remains anti-slip even in the wet.

WHY CHOOSE TREKKER?



MORE GREAT FEATURES OF TREKKER COMPOSITE DECKING

- Just like timber to work with
- * Suitable for both residential and commercial use
- * FSC Certified
- * Low long term maintenance
- * Made in Europe



The new external building regulations relates to using the material on properties over 18m in height. Our cladding and decking material is suitable to use on areas of a property that is under 18m in height. Please ask a member of staff for details.
T: 01524 737000 | info@trekkglobal.com





The mark of
responsible forestry

FSC® certified Timber (FSC-C009500) composite Decking and cladding boards suitable for both external and internal use.

Easy to install using clips and even easier to maintain, requiring nothing more than an occasional wash with plain water.

It is also UV treated for fade resistance and although it will mellow in colour, the colour will stabilize in just 2-3 weeks.

Trekker carries a 15 year warranty and must be installed according with the recommended supplier instructions.

MADE IN EUROPE

01

TREKKER EXPLAINED

NARROW WIDTH GROOVED

VULCAN GROOVED



CODE HO994

Composite Decking;
Grooved; Plank; Clip Fixing;
Square Edge; 25 Clips per
sq.m; Supplied FOC

Thickness 22mm
Width 120mm
Length 2300mm

VULCAN FASCIA



CODE HO960

Composite Fascia. Please
refer to installation
instructions on page 17.

Thickness 11mm
Width 100mm
Length 1500mm

CHOCOLATE GROOVED



CODE HO990

Composite Decking;
Grooved; Plank; Clip Fixing;
Square Edge; 25 Clips per
sq.m; Supplied FOC

Thickness 22mm
Width 120mm
Length 2300mm

CHOCOLATE FASCIA



CODE HO964

Composite Fascia. Please
refer to installation
instructions on page 17.

Thickness 11mm
Width 100mm
Length 1500mm

BRONZE GROOVED



CODE HO997

Composite Decking;
Grooved; Plank; Clip Fixing;
Square Edge; 25 Clips per
sq.m; Supplied FOC

Thickness 22mm
Width 120mm
Length 2300mm

BRONZE FASCIA



CODE HO969

Composite Fascia. Please
refer to installation
instructions on page 17.

Thickness 11mm
Width 100mm
Length 1500mm

FREE DECKING AND CLADDING SAMPLES

To aid you in the decision process, samples are available for all featured products and are supplied absolutely free of charge.

Simply order online at

www.trekkerglobal.com or call **+44(0)1524 737000**

NARROW WIDTH GROOVED

VULCAN NOSING GROOVED

CODE HO988

Can be installed either way



Thickness 22mm
Width 133mm/64mm
Length 1500mm



CHOCOLATE NOSING GROOVED

CODE HO987

Can be installed either way



Thickness 22mm
Width 133mm/64mm
Length 1500mm



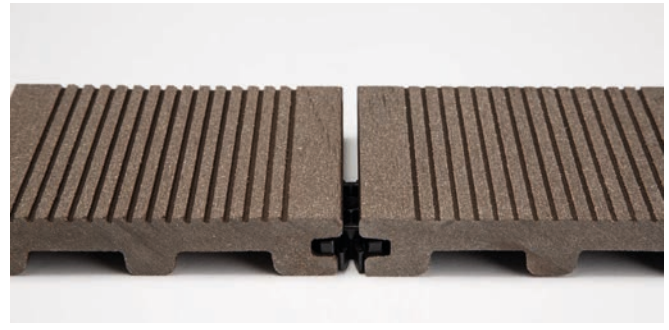
BRONZE NOSING GROOVED

CODE HO989

Can be installed either way



Thickness 22mm
Width 133mm/64mm
Length 1500mm



NYLON DECKING CLIPS

CODE HO561

25 clips per sq mt, supplied
FOC



FOC

STANDARD WIDTH GROOVED

EARTH GROOVED



CODE HO926

Composite Decking;
Grooved; Plank; Clip Fixing;
Square Edge; 25 Clips per
sq.m; Supplied FOC

Thickness 22mm

Width 143mm

Length 3200mm

EARTH FASCIA



CODE HO962

Composite Fascia. Please
refer to installation
instructions on page 17.

Thickness 11mm

Width 100mm

Length 1500mm

VULCAN GROOVED



CODE HO924

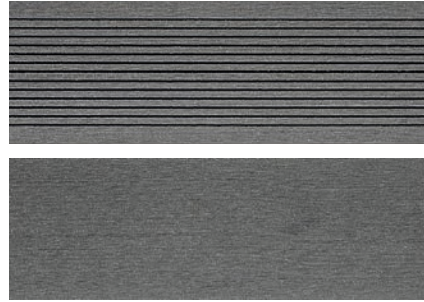
Composite Decking;
Grooved; Plank; Clip Fixing;
Square Edge; 25 Clips per
sq.m; Supplied FOC

Thickness 22mm

Width 143mm

Length 3200mm

VULCAN FASCIA



CODE HO960

Composite Fascia. Please
refer to installation
instructions on page 17.

Thickness 11mm

Width 100mm

Length 1500mm

FREE DECKING CONSULTATION

Let us help you choose the right decking product for you.

Request a consultation today on **+44(0)1524 737000**

STANDARD WIDTH GROOVED

EARTH NOSING GROOVED



CODE HO986

Can be installed either way

Thickness 22mm

Width 133mm/64mm

Length 1500mm



VULCAN NOSING GROOVED



CODE HO988

Can be installed either way

Thickness 22mm

Width 133mm/64mm

Length 1500mm



NYLON DECKING CLIPS



CODE HO561

25 clips per sq mt, supplied
FOC

FOC

STANDARD WIDTH FLUTED

ANTHRACITE FLUTED



CODE HO912

Composite Decking;
Fluted; Plank; Clip Fixing;
Square Edge; 25 Clips per
sq.m; Supplied FOC

Thickness 22mm
Width 143mm
Length 3200mm

ANTHRACITE FASCIA



CODE HO966

Composite Fascia. Please
refer to installation
instructions on page 17.

Thickness 11mm
Width 100mm
Length 1500mm

CHOCOLATE FLUTED



CODE HO910

Composite Decking;
Fluted; Plank; Clip Fixing;
Square Edge; 25 Clips per
sq.m; Supplied FOC

Thickness 22mm
Width 143mm
Length 3200mm

CHOCOLATE FASCIA



CODE HO964

Composite Fascia. Please
refer to installation
instructions on page 17.

Thickness 11mm
Width 100mm
Length 1500mm

NEW OAK FLUTED



CODE HO918

Composite Decking;
Fluted; Plank; Clip Fixing;
Square Edge; 25 Clips per
sq.m; Supplied FOC

Thickness 22mm
Width 143mm
Length 3200mm

NEW OAK FASCIA



CODE HO968

Composite Fascia. Please
refer to installation
instructions on page 17.

Thickness 11mm
Width 100mm
Length 1500mm

VULCAN FLUTED



CODE HO914

Composite Decking;
Fluted; Plank; Clip Fixing;
Square Edge; 25 Clips per
sq.m; Supplied FOC

Thickness 22mm
Width 143mm
Length 3200mm

VULCAN FASCIA



CODE HO960

Composite Fascia. Please
refer to installation
instructions on page 17.

Thickness 11mm
Width 100mm
Length 1500mm

STANDARD WIDTH FLUTED

ANTHRACITE NOSING FLUTED



CODE HO972

Can be installed either way

Thickness 22mm
Width 133mm/64mm
Length 1500mm



CHOCOLATE NOSING FLUTED



CODE HO970

Can be installed either way

Thickness 22mm
Width 133mm/64mm
Length 1500mm



NEW OAK NOSING FLUTED



CODE HO978

Can be installed either way

Thickness 22mm
Width 133mm/64mm
Length 1500mm



VULCAN NOSING FLUTED



CODE HO974

Can be installed either way

Thickness 22mm
Width 133mm/64mm
Length 1500mm

NYLON DECKING CLIPS



CODE HO561

25 clips per sq mt, supplied FOC

FOC

MIXED WIDTH GROOVED

ANTHRACITE GROOVED



CODE HO952

Composite Decking;
Grooved; Plank; Clip Fixing;
Square Edge; 25 Clips per
sq.m; Supplied FOC

Thickness 22mm
Width 138mm
Length 3200mm

ANTHRACITE FASCIA



CODE HO966

Composite Fascia. Please
refer to installation
instructions on page 17.

Thickness 11mm
Width 100mm
Length 1500mm

VULCAN GROOVED



CODE HO954

Composite Decking;
Grooved; Plank; Clip Fixing;
Square Edge; 25 Clips per
sq.m; Supplied FOC

Thickness 22mm
Width 138mm
Length 3200mm

VULCAN FASCIA



CODE HO960

Composite Fascia. Please
refer to installation
instructions on page 17.

Thickness 11mm
Width 100mm
Length 1500mm

ANTHRACITE GROOVED



CODE HO953

Composite Decking;
Grooved; Plank; Clip Fixing;
Square Edge; 25 Clips per
sq.m; Supplied FOC

Thickness 22mm
Width 183mm
Length 3200mm

VULCAN GROOVED

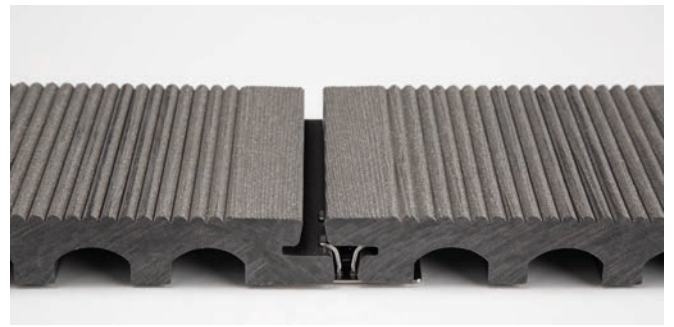
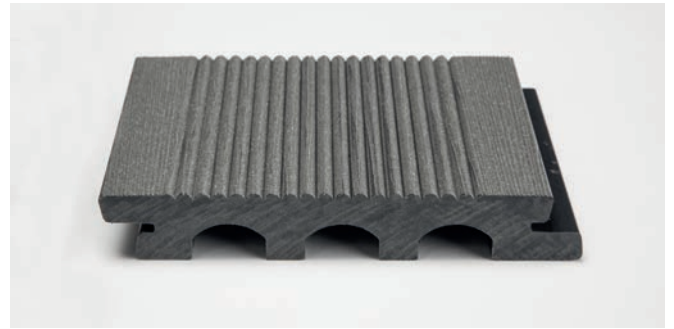


CODE HO955

Composite Decking;
Grooved; Plank; Clip Fixing;
Square Edge; 25 Clips per
sq.m; Supplied FOC

Thickness 22mm
Width 183mm
Length 3200mm

MIXED WIDTH GROOVED



METAL DECKING CLIPS



CODE HO562

25 clips per sq mt, supplied FOC. Only to be used with decks HO952/HO954/HO953/HO955

FOC

STANDARD WIDTH WOOD GRAIN

ANTHRACITE WOOD GRAIN



CODE HO902

Composite Decking; Wood Grain; Plank; Clip Fixing; Square Edge; 25 Clips per sq.m; Supplied FOC

Thickness 22mm
Width 143mm
Length 3200mm

ANTHRACITE FASCIA



CODE HO966

Composite Fascia. Please refer to installation instructions on page 17.

Thickness 11mm
Width 100mm
Length 1500mm



VULCAN WOOD GRAIN

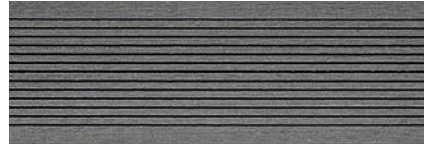


CODE HO904

Composite Decking; Wood Grain; Plank; Clip Fixing; Square Edge; 25 Clips per sq.m; Supplied FOC

Thickness 22mm
Width 143mm
Length 3200mm

VULCAN FASCIA



CODE HO960

Composite Fascia. Please refer to installation instructions on page 17.

Thickness 11mm
Width 100mm
Length 1500mm



CHOCOLATE WOOD GRAIN



CODE HO900

Composite Decking; Wood Grain; Plank; Clip Fixing; Square Edge; 25 Clips per sq.m; Supplied FOC

Thickness 22mm
Width 143mm
Length 3200mm

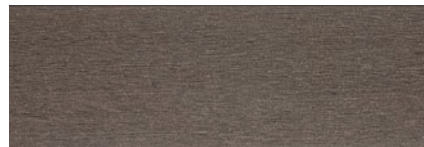
CHOCOLATE FASCIA



CODE HO964

Composite Fascia. Please refer to installation instructions on page 17.

Thickness 11mm
Width 100mm
Length 1500mm



FREE DECKING AND CLADDING SAMPLES

To aid you in the decision process, samples are available for all featured products and are supplied absolutely free of charge.

Simply order online at

www.trekkerglobal.com or call **+44(0)1524 737000**

STANDARD WIDTH WOOD GRAIN

ANTHRACITE NOSING WOOD GRAIN

CODE HO982

Can be installed either way



Thickness 22mm
Width 133mm/64mm
Length 150mm



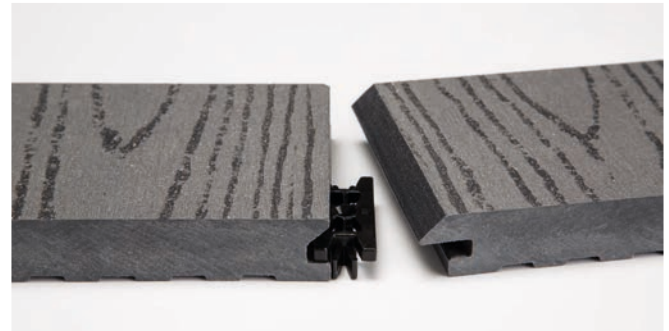
VULCAN NOSING WOOD GRAIN

CODE HO984

Can be installed either way



Thickness 22mm
Width 133mm/64mm
Length 150mm



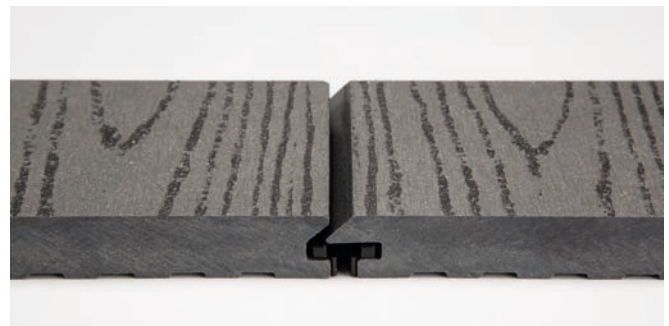
CHOCOLATE NOSING WOOD GRAIN

CODE HO980

Can be installed either way



Thickness 22mm
Width 133mm/64mm
Length 150mm



NYLON DECKING CLIPS

CODE HO561

25 clips per sq mt, supplied
FOC

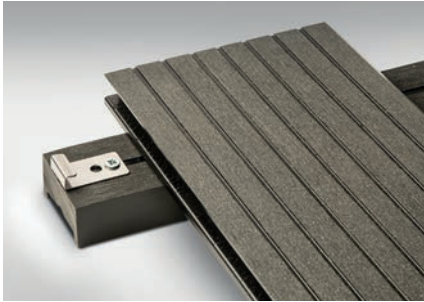


FOC

DECKING JOIST PROFILE**CODE HO550**

Solid Composite
Construction 'NOT LOAD
BEARING'. Must be installed
on solid level substrate

Thickness	30mm
Width	50mm
Length	2300mm

DECKING STARTING CLIP**CODE HO555****per box**

MAINTENANCE CLEANER**CODE HO557**

FREE DECKING AND CLADDING SAMPLES

To aid you in the decision process, samples are available for all featured products and are supplied absolutely free of charge.

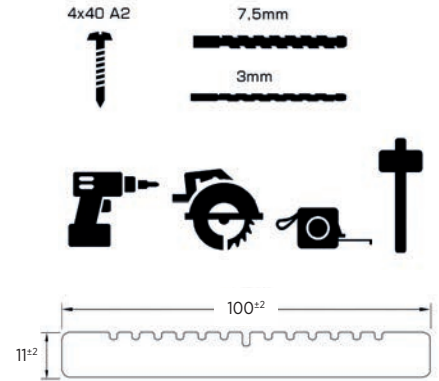
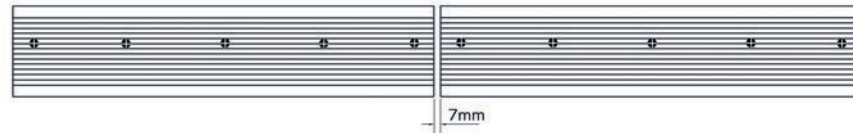
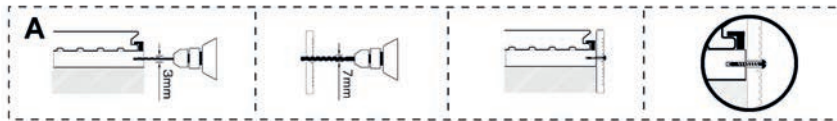
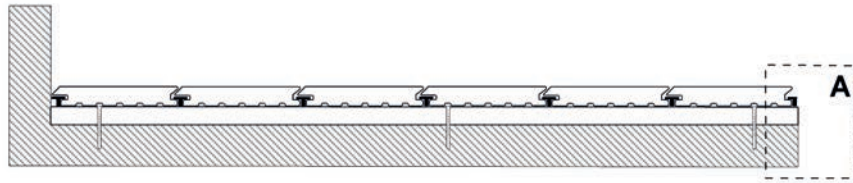
Simply order online at

www.trekkerglobal.com or call **+44(0)1524 737000**



INSTALLATION GUIDE

TREKKER FASCIA INSTALLATION



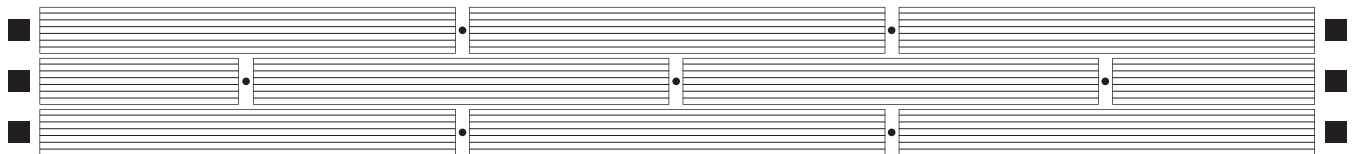
EXPANSION GAPS FOR DECK INSTALLATION

Prior to installation, always stack boards on a flat surface and protect them from direct hot sunlight.

Since the boards will expand when subjected to heat, during installation please ensure that you adapt the expansion gaps according to the ambient temperature as per the chart shown opposite.

Ambient temperature	10-20°C	20-30°C	30-35°C
Expansion gaps	8mm	7mm	6mm

DO NOT INSTALL IF TEMPERATURES ARE ABOVE 35°C



● Expansion gaps ■ Distance to fixed objects (walls, etc).

PEDESTALS



ALUMINIUM JOIST SYSTEM



Code HO5010
Starting clips (3 clips per sq.m.)

FOC



Code HO5014
Joist connector 25 pieces per bag
(1 joist connector per joist)



Code HO5008
Mounting clip. (21 clips per sq.m.)

FOC



Code HO5000
50mm x 2.4 metres long rail aluminium

(sq.m. x 3.6 linear metres divided
by 2.4 metres)



Code HO5006
Pedestal top plate joist connector
(For aluminium rail, 1 per pedestal)



Code HO5012
Timber bearer connector
(for timber joists, 1 per pedestal)



Code HO930
Adjustable Pedestals 37-50mm
(6 pedestals per sq.m.)

per item



Code HO931
Adjustable Pedestals 50-75mm
(6 pedestals per sq.m.)

per item



Code HO932
Adjustable Pedestals 74-117mm
(6 pedestals per sq.m.)

per item



Code HO933
Adjustable Pedestals 117-201mm
(6 pedestals per sq.m.)

per item



Code HO934
Adjustable Pedestals 197-281mm
(6 pedestals per sq.m.)

per item

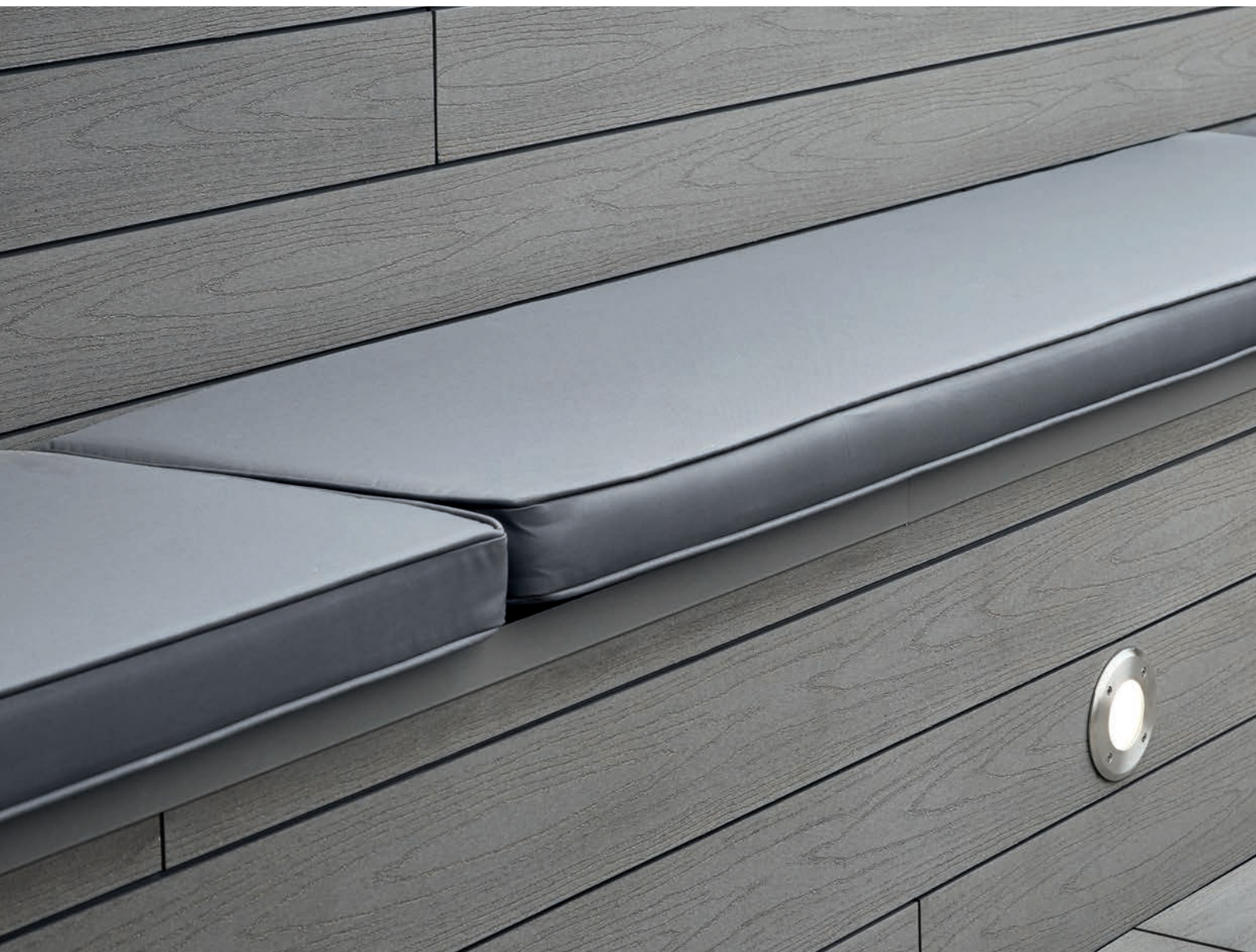
02

RAISED PEDESTAL AND RAIL SYSTEM

Our range of height adjustable decking and paving pedestals are easy to use and engineered for high performance. They are perfect system for building an effective platform, and suitable both for decking as well as porcelain tiles. Made with high grade aluminium, the quality of joists is guaranteed, with an expected lifetime of more than 30 years. With extreme flexibility and stability of the substructure the system opens up endless possibilities for the design and layout of your outdoor space.

We are pleased to confirm that the fire rating of the raised pedestal and rail system is Class A and they are suitable to be used over 18 metres.

JOIST ADAPTION
HO512 AVAILABLE TO USE TIMBER JOISTS





03

TREKKER CLADDING & TRIMS

CLADDING

CHOCOLATE CLADDING



CODE HO940

Composite Cladding; Wood Grain; Plank; Interlocking Square Edge

Thickness 16mm

Width 157mm

Length 3200mm

ATHRACITE CLADDING



CODE HO942

Composite Cladding; Wood Grain; Plank; Interlocking Square Edge

Thickness 16mm

Width 157mm

Length 3200mm

VULCAN CLADDING



CODE HO944

Composite Cladding; Wood Grain; Plank; Interlocking Square Edge

Thickness 16mm

Width 157mm

Length 3200mm

FREE DECKING AND CLADDING SAMPLES

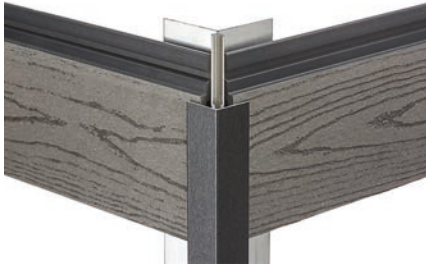
To aid you in the decision process, samples are available for all featured products and are supplied absolutely free of charge.

Simply order online at

www.trekkerglobal.com or call **+44(0)1524 737000**



EXTERNAL TRIMS - ALUMINIUM



CODE HO2293

Black external corner
3m lengths

CODE HO2294

Brown external corner
3m lengths

CODE HO2295

Grey external corner
3m lengths

WINDOWS/STOP TRIM



CODE HO2296

Black trim 25 x 30mm
3m lengths
(Trim for window surrounds)

CODE HO2297

Brown trim 25 x 30mm
3m lengths

CODE HO2298

Grey trim 25 x 30mm
3m lengths

STARTER RAIL - ALUMINIUM



CODE HO2299

35 x 8mm
3m lengths

CORNER TRIM - ALUMINIUM



CODE HO2290

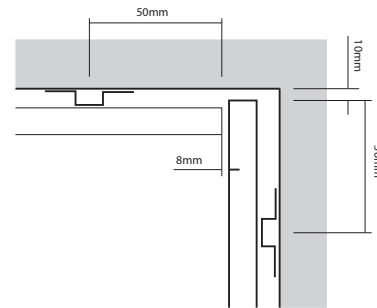
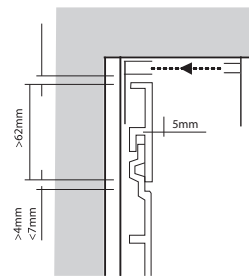
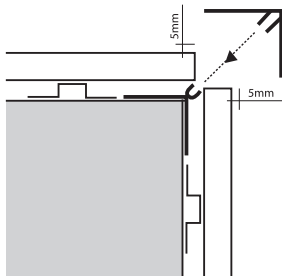
Black corner trim 35 x 48mm
3m lengths

CODE HO2291

Brown corner trim 35 x 48mm
3m lengths

CODE HO2292

Grey corner trim 35 x 48mm
3m lengths



For more information regarding the installation of our trims please call 01524 737000



DECKBOOK | July - September 2020

London Clerkenwell Showroom, 26-27 Great Sutton St, London EC1V 0DS

66a Turnmill Street Farringdon, Clerkenwell, London, EC1M 5RR

London Chelsea Showroom, 600 King's Rd, Fulham, London SW6 2YW

Lancashire Showroom, Carnforth Business Park, Oakwood Way, Carnforth LA5 9FD

Manchester Showroom, 2 Commercial St, Manchester M15 4RQ

Havwoods Limited Registered in England No. 01225320



www.trekkerglobal.com

info@trekkerglobal.com

T. +44(0)1524 737000

